

EVERLOCK Insulating Foundation Siding

Installation Instructions For Modular/Conventional Homes (For Homes With Existing Foundations)

Panel Application Tools

Tools & Accessories You Will Need (not included)

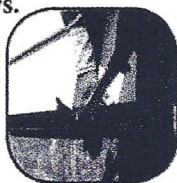
Installation Steps:

You Will Need: Ultra Lite Panels, J-Channel (optional), rigid foam adhesive, shovel, wire brush, rasp or file, caulking gun, tin snips, rule, hammer, utility knife.

1) Dig around the foundation to the desired depth (usually about 1 foot)

Place the removed dirt on sheets of plastic, replacing it will be much easier and the lawn will not be harmed. Check with local Utility Companies before you dig!

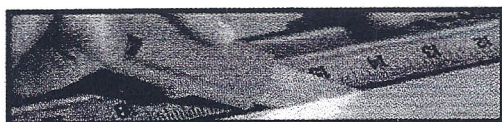
2) Attach (optional) J-Channel tightly to the bottom of the siding and around the windows.



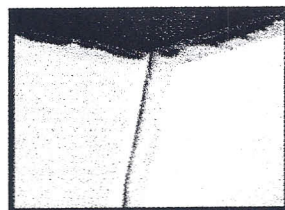
J-Channel is optional. On most houses the siding extends far enough from the side of the house to properly seat the panels.

3) Wire brush the foundation to make sure it is clean and that any loose particles are removed.

4) Panels can be cut from the back (foam) side using a utility knife and straight edge.

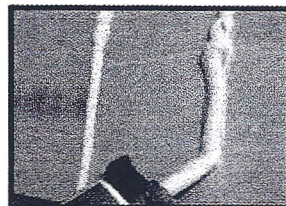
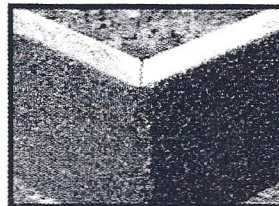


5) After cutting, snap the panel by applying pressure from the coated side of the panel (similar to snapping drywall)



Imperfect edges are easily hidden under grade or by the siding or J-channel. For perfect edges use a circular saw with a masonry blade.

6) Corner pieces are made by rasping panel edges with a coarse rasp or file. With the coated surface facing down on a firm surface, file the foam to form an angled corner piece.

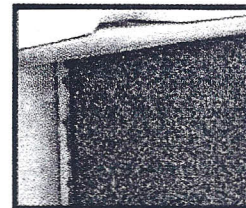
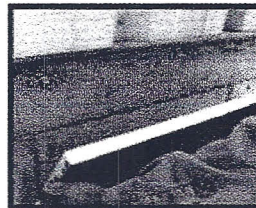


7) Apply rigid foam construction adhesive such as Styro Mastic liberally to the back of the panel. Run the glue vertically (for drainage) every 6 inches. Press the panels firmly against the foundation & replace the dirt to help hold them in place while the adhesive sets.

8) If you're not using J-Channel it may help to apply pressure on the panel with a heavy object (wood, cinder block) until the adhesive sets. Fasteners such as Styro Tapits or Tapcon Screws can also be used below and/or above grade in conjunction with the adhesive.

9) Butting the panels tightly together will reduce the appearance of seams and corners. Seams and corners may also be caulked and hand seeded with matching stone. For best results use a caulk color that closely matches the base coat of the panel.

10) For installation over a paved surface allow a gap of 1" between the bottom of the panel and the pavement to allow for expansion.



EVERLOCK SYSTEMS, INC.

6676 GunPark Drive #F, Boulder, CO 80301

800.843.3336
Fax: 303.530.3820
www.everlock.com