



Squeeeeek

No More

Squeeeeek No More®

**- PATENTED -
THE FLOOR SQUEAK
ELIMINATION SYSTEM FOR
CARPETED, HARDWOOD, AND
LINOLEUM FLOORS.**

WARNING: This is engineered to work with the components provided. Any attempt to substitute parts can cause damage to the floor and may cause injury to the user.

WARNING: Always use safety glasses.

WARNING: Use in well lighted areas, use work lights if necessary.

WARNING: Keep out of reach of children, and store in a secure place.

THIS KIT CONTAINS:

- An alignment and depth control fixture part #3240.
- 50 special scored screws, part #3251.
- Square head driver bit with a stop, part #3261.
- Taped screw example for berber carpet.
- Joist finding screw #3255.
- Instructions

Tips on Squeaks:

Most squeaks in floors are caused by nails used in constructing the floor working loose and rubbing on the floorboard when you step on the area. Because of this the sooner you can eliminate the squeak the better. Young squeaks are much easier to correct than old timers, which have been allowed to grow.

Mechanical squeaks are caused by the floor rubbing on the cold air return or the floor flexing and rubbing on a pipe or electrical line. These are identified by a mechanical noise when you step on the area. **Squeeeeek No More®** can correct these in many cases by tightening the floor and by eliminating movement in the floor members.

Squeeeeek No More® Joist Finding Screw

The **Squeeeeek No More® Joist Finding Screw** is an easy to use tool that will find the exact location of your floor joists from above the floor. The screw is designed to work on carpeted plywood or chipboard floors.

The screw is *not* designed to find the joist under hardwood floors. Each plank in a hardwood floor has nails in it. The nails, in general, cause the squeaks. With hardwood floors, you need to drive the screws down into the plank that is visibly moving or where the noise is coming from, not necessarily into the joist.

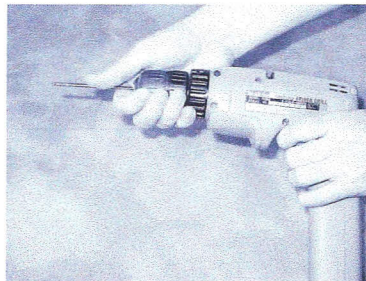
On plywood or chipboard floors, the nails are driven into the joist to hold the floor down. Over time, the nails loosen and allow the wood to move back and forth on the smooth shank portion of the nail. On this type of floor we use the Joist Finder, find the joist, and fasten the floor to the joist.

* When working on a berber or loop carpet cover the short section of thread with transparent tape similar to the taped example screw provided in the kit. This will prevent the screw thread from touching the carpet fiber and possibly pulling a strand. Pile carpet this is not necessary.

Tools Needed

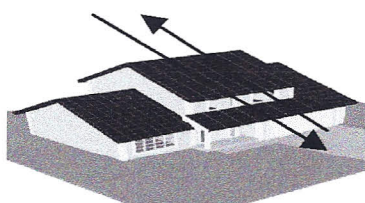
1. 4 1/2" Joist Finder Screw(provided)
2. Tape Measure
3. Power Drill

Step 1. Insert hex portion of the Joist Finding Screw into drill chuck and tighten.

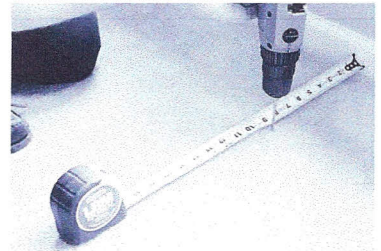


Step 2. Determine the direction of the floor joists. The joists almost always parallel the narrow dimension of the house.

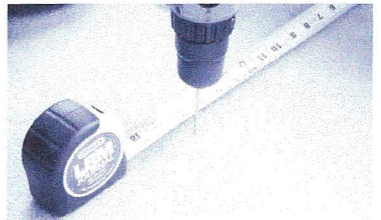
Joist run the narrow dimensions



Step 3. Measure 9 inches from a wall that is parallel to the direction of the joist. This is a good starting point that should be very close to the joist. Or if you have a heat vent in the floor you can use that to find the joist. The vent is always between two joists. If you were to start next to the vent you will probably find the joist on the first or second attempt. Drive the Joist Finding Screw down into the floor 2 inches.



Step 4. Shift the drill into reverse. If the screw doesn't back out, the threads of the screw aren't in the joist. Lift the drill while you slowly reverse the drill, this will back the screw out. Move over an inch, moving away from the wall or the vent if you are using that, and drive it down again.



Step 5. Continue these steps until the screw comes up on its own indicating that you have gone into the joist. At this point you can measure across the room to the other joists. Floor joist are normally set on 16 inch centers.

Instructions for using Squeeeek No More®

1. The Squeeeek No More® system will eliminate most squeaks under carpet, hardwood, vinyl and linoleum floors. There can be cases where all squeaks cannot be completely eliminated. This points to floor damage due to misapplication of the sub floor, water damage, structural damage, mechanical damage and other causes. These cases should be referred to a carpenter or floor professional to prevent further damage.
2. Normally more than one screw is needed. It is best add additional screws along the joist, spaced approximately 4 inches.
3. Always use safety glasses and use in well lighted areas.
4. Snap off the screw heads at the end of the project, and thoroughly inspect the area to insure all of the screw heads are removed.

Instructions for Berber Carpet

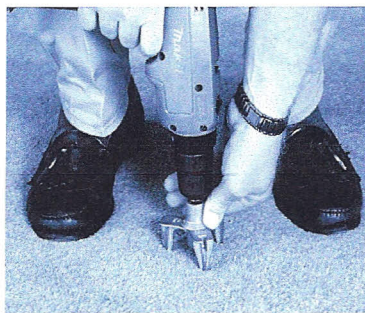
In general there are two types of carpeting Pile and Berber. Berber is made with a series of loops from one continuous strand of fiber. When working with Berber carpet use a screw that has its tip and thread covered with a transparent household tape, like the one provided in the kit. It is important to use a taped screw on Berber carpet because it shields the screw threads from grabbing the carpet fiber. After you tape the screws follow the instructions below.

Instructions for Carpeted Floors over Plywood or Chipboard



Locate the floor joist using the Joist Finding Screw. Then push the Alignment and Depth control fixture firmly into the carpet.

Place your weight around the fixture and drive the scored screw down as far as the fixture will allow it to go.



Place the screw gripper, on the alignment fixture, over the screw head. Then rock the fixture left to right snapping the head off. The screw breaks at the weak spot that is consistently set below the surface of the floor. Squeaks are gone and no damage is done the carpet.



Instructions for Hardwood Floors

1. Locate the plank that is squeaking. It is not necessary to find the joist in a hardwood floor. Because each plank has nails in it and the wood moving back and forth on the nail shank causes the squeaks we are looking to focus in on the plank that is allowing the movement.
2. Using a 1/8" drill bit drill a hole 1" into the floor. Start the scored screw a few turns into the pilot hole. Place the Alignment and Depth Control Fixture over the screw head.
3. Place your feet on either side of the fixture and drive the screw into the pilot hole as far as the fixture will allow.
4. Slide the screw gripper on the leg of the Alignment and Depth Control Fixture over the screw and gently rock the fixture to snap off the screw head.
5. Fill the small hole with wood putty that matches the floor color.

Instructions for Vinyl and Linoleum Floors

Follow the directions for hardwood floors. To patch the small hole use a caulk that matches the color of the floor. You can also use a crayon that is the color of the floor.

Squeaks in Stairs

Stairs have three components: the stringer or carriage, the tread, and the riser. The stringer is the notched board to which the tread and riser are attached. The squeak usually is caused by the nails used to hold the tread to the stringer becoming loose. To fix the squeak, place the alignment fixture as close as possible to the sidewall and drive a screw through the tread into the stringer. Use the screw gripper to snap off the top of the screw.

The riser is generally 1/2" to 1/4" behind the front lip of the tread. Place the alignment fixture as close to the front edge as possible and drive a screw into the tread and snap off the top of the screw.

Replacement Parts Available

Package of 50 screws,
Part 3251

Package of 250
screws, Part 3252

Package of 500
screws, Part 3253

Driver Bit, Part 3261

*For replacement parts
see your local
hardware/building
supply retailer or call
800-459-8428*

Squeeeek No More® is manufactured in the U.S.A.
and the R.O.C. and assembled at
The Pioneer Center of McHenry County.

O'Berry Enterprises Inc.

5306 Business Pky. #110 • Ringwood, IL 60072
Phone: 1-800-459-8428 Fax: 1-815-728-9157
E-mail: jloberry@mc.net

Copyright 2007